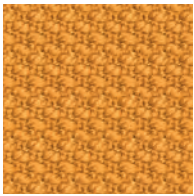
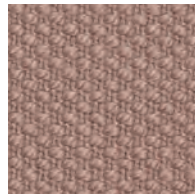


Steelcut 3

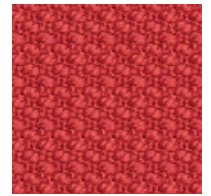
kvadrat



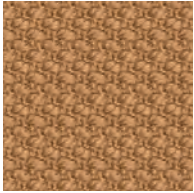
452



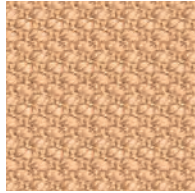
605



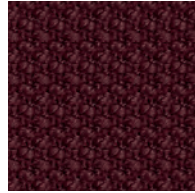
552



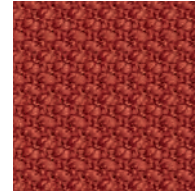
252



402



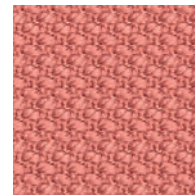
682



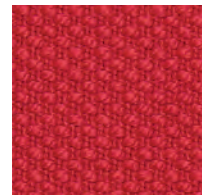
562



445



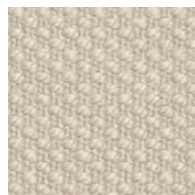
612



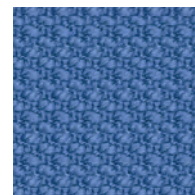
545



120



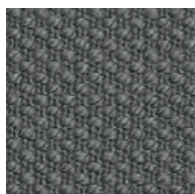
110



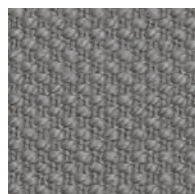
732



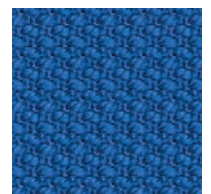
140



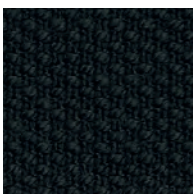
160



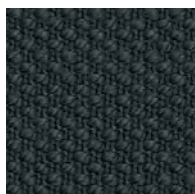
155



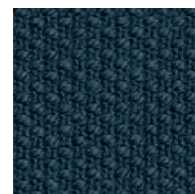
742



190



180

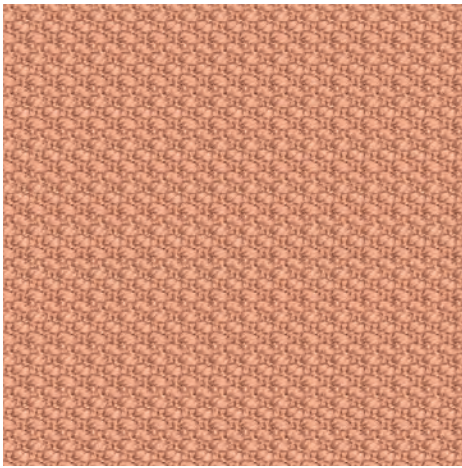


780

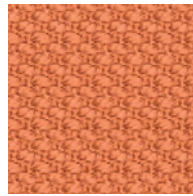


775

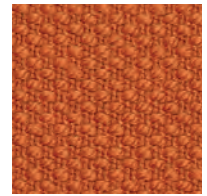
Steelcut 3



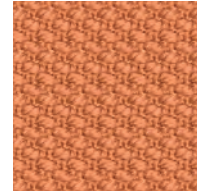
502



522



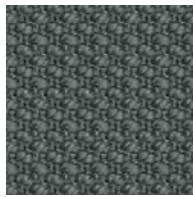
535



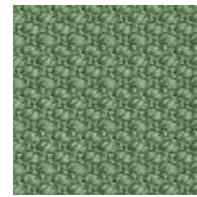
512



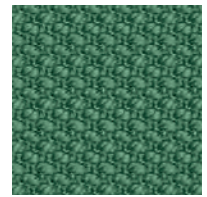
975



922



912



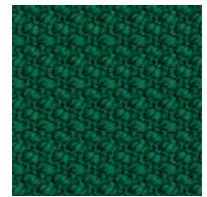
932



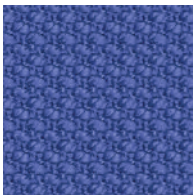
662



985



962



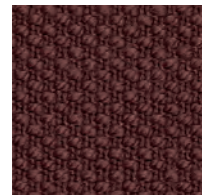
652



265



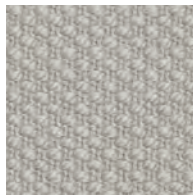
365



655



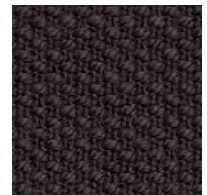
672



220



240



695

Steelcut 3

Designed by Frans Dijkmeijer and Giulio Ridolfo

DK

Anvendelse Kontorer, hoteller, institutioner, private indretninger. Stor slidstyrke.

Beskrivelse 90% ny uld, kamgarn, 10% nylon. Bredde ca. 140 cm. Vægt ca. 825 g/lbm. Stykfarvet. I lyse farver kan fremmede fibre forekomme. Nuanceforskelle kan forekomme.

Ægkant ↓

Slidstyrke: Ca. 100.000 slidbevægelser efter Martindale metoden EN ISO 12947. **Lysægthed** (ISO) 5-6. **Pilling** (EN ISO) 3-4. **Gnidægthed** (ISO) tør 4-5, våd 3-5. **Lydsabsorption** (EN ISO 354) 0.65/Class C (fladt), 0.80/Class B (foldet). **Airflow** 1014 Pa s/m. **Flammesikring:** AS/NZS 1530.3. AS/NZS 3837 Class 2. ASTM E84 Class A hæftet. ASTM E84 Class B limet. BS 5852 Crib 5 med flammesikring. BS 5852 part 1. EN 1021-1/2. IMO FTP Code 2010:Part 8. NF D 60 013. NFPA 260. SN 198 898 5.3 med flammesikring. UNI 9175 11M. US Cal. Bull. 117-2013. ÖNORM B2 / Q1. (Kopi af testrapport kan rekvireres). **Vedligeholdelse** Se ISO symboler. Desinfektion, se kvadrat.dk.

UK/US

Application Offices, hotels, institutions, domestic use. Great durability.

Description 90% new wool, worsted, 10% nylon. Width app. 55 inches (140 cm). Weight app. 825 g/lin.m, 26.6 oz/ly. Piece dyed. Foreign fibres may occur in light colours. Colour differences may occur.

Selvedge/Direction ↓

Abrasion: App. 100,000 rubs acc. to the Martindale method EN ISO 12947*. **Lightfastness** (ISO) 5-6. **Pilling** (EN ISO) 3-4. **Fastness to rubbing** (ISO) dry 4-5, wet 3-5. **Sound absorption** (EN ISO 354) 0.65/Class C (flat), 0.80/Class B (waved). **Airflow** 1014 Pa s/m. **Flame resistance:** AS/NZS 1530.3. AS/NZS 3837 Class 2. ASTM E84 Class A unadhered. ASTM E84 Class B adhered. BS 5852 Crib 5 with treatment. BS 5852 part 1. EN 1021-1/2. IMO FTP Code 2010:Part 8. NF D 60 013. NFPA 260. SN 198 898 5.3 with treatment. UNI 9175 11M. US Cal. Bull. 117-2013. ÖNORM B2 / Q1. (Copy of test report available). **Care** Please see the ISO symbols. Disinfection, see kvadrat.dk.

DE

Anwendungsbereich Büros, Hotels, Objectbereich, privaten Wohnbereich. Hohe Strapazierfähigkeit.

Beschreibung 90% Schurwolle, Kammgarn, 10% Nylon. Breite ca. 140 cm. Gewicht ca. 825 g/m. Stückgefärbt. In hellen Farben können Fremdfasern vorkommen. Farbunterschiede können vorkommen.

Webkante ↓

Scheuerfestigkeit: Ca. 100.000 Scheuerhübe nach der Martindale Methode EN ISO 12947. **Lichtechtheit** (ISO) 5-6. **Pilling** (EN ISO) 3-4. **Reibechtheit** (ISO) trocken 4-5, nass 3-5. **Schallabsorption** (EN ISO 354) 0.65/Class C (glatt), 0.80/Class B (gefaltet). **Airflow** 1014 Pa s/m. **Flammschutz:** AS/NZS 1530.3. AS/NZS 3837 Class 2. ASTM E84 Class A unverklebt. ASTM E84 Class B verklebt. BS 5852 Crib 5 mit Ausrüstung. BS 5852 part 1. EN 1021-1/2. IMO FTP Code 2010:Part 8. NF D 60 013. NFPA 260. SN 198 898 5.3 mit Ausrüstung. UNI 9175 11M. US Cal. Bull. 117-2013. ÖNORM B2 / Q1. (Testbericht verfügbar). **Pflege** Siehe ISO Pflegesymbole. Desinfektion, siehe kvadrat.dk.

NL

Toepassing Kantoren, hotels, instellingen, de privéfeer. Uitstekende slijtvastheid.

Omschrijving 90% scheerwol, kamgaren, 10% nylon. Breedte ca. 140 cm. Gewicht ca. 825 g/str. m. Stukgeverfd. Afwijkende vezels kunnen voorkomen in lichte kleuren. Kleurverschillen kunnen optreden.

Zelfkant ↓

Slijtvastheid: Ca. 100.000 toeren Martindale EN ISO 12947. **Lichtechtheid** (ISO) 5-6. **Pilling** (EN ISO) 3-4. **Wrijftechtheid** (ISO) droge 4-5, natte 3-5. **Geluidsabsorptie** (EN ISO 354) 0.65/Class C (vlak), 0.80/Class B (geplooid). **Airflow** 1014 Pa s/m. **Brandwerendheid:** AS/NZS 1530.3. AS/NZS 3837 Class 2. ASTM E84 Class A ongelijmd. ASTM E84 Class B gelijmd. BS 5852 Crib 5 met behandeling. BS 5852 part 1. EN 1021-1/2. IMO FTP Code 2010:Part 8. NF D 60 013. NFPA 260. SN 198 898 5.3 met behandeling. UNI 9175 11M. US Cal. Bull. 117-2013. ÖNORM B2 / Q1. (Op aanvraag sturen wij graag een kopie van het testrapport toe). **Onderhoud** Zie de ISO symbolen. Desinfectie, kvadrat.dk.

FR

Domaine d'utilisation Tissu d'ameublement pour aménagement privé et public. Grande résistance.

Description 90% laine vierge, peigné, 10% nylon. Largeur env. 140 cm. Poids env. 825 g/m lg. Teinture à la pièce. Dans les couleurs claires, présence de fibres étrangères. Ecart des coloris possibles.

Lisière ↓

Résistance à l'abrasion: Env. 100.000 révolutions selon le procédé Martindale EN ISO 12947. **Résistance à la lumière** (ISO) 5-6. **Boulochage** (EN ISO) 3-4. **Résistance au frottement** (ISO) sec 4-5, mouillé 3-5. **Absorption acoustique** (EN ISO 354) 0.65/Class C (à plat), 0.80/Class B (plié). **Airflow** 1014 Pa s/m. **Normes au feu:** AS/NZS 1530.3. AS/NZS 3837 Class 2. ASTM E84 Class A non collé. ASTM E84 Class B collé. BS 5852 Crib 5 avec traitement. BS 5852 part 1. EN 1021-1/2. IMO FTP Code 2010:Part 8. NF D 60 013. NFPA 260. SN 198 898 5.3 avec traitement. UNI 9175 11M. US Cal. Bull. 117-2013. ÖNORM B2 / Q1. (La copie du compte rendu des tests est disponible sur demande). **Entretien** Voir les symboles ISO. Désinfection, voir kvadrat.dk.

IT

Destinazione d'uso Rivestimenti per imbottiti, casa e contract. Alta resistenza all'abrasione.

Caratteristiche 90% lana vergine, pettinata, 10% nylon. Altezza circa 140 cm. Peso circa 825 gr/mtl. Tinto in pezza. Nei colori chiari possono essere presenti fibre di tonalità scure. Possibili differenze per colore.

Cimosa ↓

Resistenza all'abrasione: circa 100.000 cicli/metodo Martindale EN ISO 12947. **Resistenza alla luce** (ISO) 5-6. **Pilling** (EN ISO) 3-4. **Resistenza allo sfregamento** (ISO) condizione a secco 4-5, condizione umido 3-5. **Assorbimento acustico** (EN ISO 354) 0.65/Class C (a pannello (tesa)), 0.80/Class B (arricciata). **Airflow** 1014 Pa s/m. **Ignifugazione:** AS/NZS 1530.3. AS/NZS 3837 Class 2. ASTM E84 Class A non incollato. ASTM E84 Class B incollato. BS 5852 Crib 5 se trattato ignifugo. BS 5852 part 1. EN 1021-1/2. IMO FTP Code 2010:Part 8. NF D 60 013. NFPA 260. SN 198 898 5.3 se trattato ignifugo. UNI 9175 11M. US Cal. Bull. 117-2013. ÖNORM B2 / Q1. (Disponibile copia del test). **Manutenzione** Per favore seguire simboli ISO. Per disinfettare, vedi il sito kvadrat.dk.

ES

Aplicación Adecuado para el uso en oficinas, hoteles, instituciones y hogares. Gran resistencia al desgaste.

Descripción 90% lana virgen, peinada, 10% nilón. Anchura aprox. 140 cm. Peso aprox. 825 gr/ml. Teñido en pieza. En los colores claros puede haber fibras de otro color. Posibles variaciones de color.

Filo ↓

Resistencia al desgaste: Aprox. 100.000 ciclos según el método Martindale EN ISO 12947. **Resistencia a la luz** (ISO) 5-6. **Relleno** (EN ISO) 3-4. **Solidez al frotamiento** (ISO) seco 4-5, mojado 3-5. **Absorción acústica** (EN ISO 354) 0.65/Class C (estor), 0.80/Class B (cortina). **Airflow** 1014 Pa s/m. **Resistencia al fuego:** AS/NZS 1530.3. AS/NZS 3837 Class 2. ASTM E84 Class A sin pegar. ASTM E84 Class B pegado. BS 5852 Crib 5 con tratamiento. BS 5852 part 1. EN 1021-1/2. IMO FTP Code 2010:Part 8. NF D 60 013. NFPA 260. SN 198 898 5.3 con tratamiento. UNI 9175 11M. US Cal. Bull. 117-2013. ÖNORM B2 / Q1. (Copia del informe de ensayos disponible). **Limpieza** Consulte los símbolos ISO. Desinfección, visita kvadrat.dk.

JP

用途 オフィス、ホテル、各種施設、住宅インテリア。耐耗性大。

詳細 ニューウール、ウーステッド 90%、ナイロン 10%。幅: 140cm。重量: 1m あたり約 825 gr。後染め、明色の場合、異質繊維が混在する場合があります。色に多少の違いが生じる場合があります。

セルピッチ ↓

テスト

磨耗: マーチンデール法により摩擦運動約 100,000 回。EN ISO 12947. **耐光性:** (ISO) 5-6. **ピリング** (EN ISO) 3-4. **摩擦保証:** (ISO) 乾燥状態 4-5、濡れた状態 3-5. **吸音率** (EN ISO 354) 0.65/Class C (パネル状)、0.80/Class B (ドレープ状). **気流:** 1014 Pa s/m. **防炎性:** AS/NZS 1530.3. AS/NZS 3837 Class 2. ASTM E84 Class A unadhered. ASTM E84 class B 耐火性レベル1。特殊耐炎処理を行うことにより、BS 5852 Crib 5 に到達可能。BS 5852 part 1. EN 1021-1/2. IMO FTP Code 2010:Part 8. NF D 60 013. NFPA 260. 特殊耐炎処理を行うことにより、SN 198 898 5.3 に到達可能。UNI 9175 11M. US Cal. Bull. 117-2013. ÖNORM B2 / Q1. (認定書類のご用意あり。)

お手入れ

ISO シンボル参照。消毒について? kvadrat.dk まで参照ください。

CN

适用范围 办公室、宾馆酒店、公共设施、居家使用。耐耗性大。

成分 90% 新羊毛，精纺，10% 尼龙。幅宽约 55 英寸 (140 cm)。重量 825 克/延米。匹染色面料。颜色可能稍有色差。

图纹方向 ↓

马丁代尔法 约 100,000 转。EN ISO 12947. **光照色牢度** (ISO) 5-6. **起毛起球** (EN ISO) 3-4. **摩擦色牢度** (ISO) 干燥 4-5, 湿 3-5. **吸声系数** (EN ISO 354) 0.65/Class C (隔断帘), 0.80/Class B (一般窗帘使用). **气流阻力** 1014 Pa s/m. **阻燃性:** AS/NZS 1530.3. AS/NZS 3837 Class 2. ASTM E84 Class A unadhered. ASTM E84 Class B 防火等级 1。特别耐火处理时 BS 5852 Crib 5 可以满足。BS 5852 part 1. EN 1021-1/2. IMO FTP Code 2010:Part 8. NF D 60 013. NFPA 260. 特别耐火处理时 SN 198 898 5.3 可以满足。UNI 9175 11M. US Cal. Bull. 117-2013. ÖNORM B2 / Q1. (可提供测试报告副本)。 **维护** 请参照 ISO 标志。消毒请参阅 kvadrat.dk。



10 year warranty



US contact info: 1-800-620-9309

Quality and environmental system accreditation according to ISO 9001 and ISO 14001.

* ACT® Registered Certification Marks

* Abrasion test results exceeding ACT performance guidelines are not an indicator of product lifespan. Multiple factors affect fabric durability and appearance retention.

EU Ecolabel: Encouraging the use of sustainable fibres. Durable and high quality. Hazardous substances restricted.

Contact and further information kvadrat.dk